



Technical Service Information Bulletin

July 18, 1997

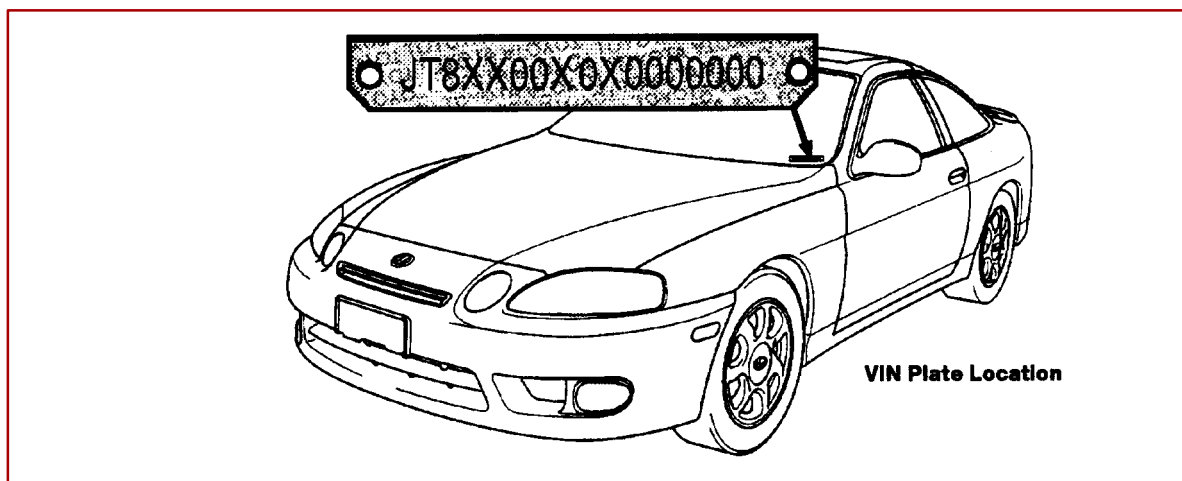
Title: REPLACEMENT VIN PLATES

Models:
All Models

PG004-97

PRODUCT GENERAL INFORMATION

Introduction Replacement **VIN** plates (metal plate riveted to dashboard) **may be** available from Lexus providing the request meets one of the criteria listed below.



Affected Vehicles

- All Lexus vehicles.

Replacement VIN Plate Criteria

- The vehicle is in an accident and the plate is damaged.

NOTE:

The plate to be replaced **MUST** accompany the request.

NOTE:

If a plate is stolen, be sure to contact the State Police or the Department of Motor Vehicles. In most cases the state will issue a unique number so that the original number can be included on stolen vehicle listings. If this is the case, a replacement VIN plate is **NOT** available from Lexus. However, the original VIN, **NOT** the state-issued VIN, must be used on all warranty claims.

Procurement Procedure

To request a replacement plate, complete a **copy** of the form on the back of this page. Note that damaged VIN plates must accompany the request form. Your dealer parts account will be billed \$10.00 for each replacement of a damaged plate.

NOTE:

All replacement plates for damaged and/or stolen vehicles are subject to approval by the Technical Compliance Department. If you have any specific questions, contact (310)781-3390.

Warranty Information

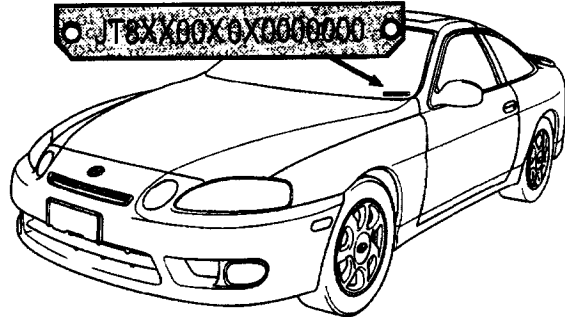
- No applicable Warranty Information.



Lexus Supports ASE Certification



APPLICATION FOR REPLACEMENT VIN PLATE



REASON FOR REPLACEMENT:

☐ ACCIDENT DAMAGE

☐ OTHER _____

REASON OR EXPLANATION

PLEASE PROVIDE CORRECT VIN

--	--	--	--	--	--	--	--	--	--	--	--	--	--	--	--	--	--



DEALER INFORMATION

DEALER CODE:

--	--	--	--	--

DEALER NAME: _____

ADDRESS: _____
STREET ADDRESS

CITY, STATE, ZIP CODE

TELEPHONE: () _____
AREA CODE, TELEPHONE NUMBER

CONTACT: _____
FIRST NAME, LAST NAME

MAIL (DO NOT FAX) THE COMPLETED REQUEST FORM WITH THE OLD PLATE TO:

TOYOTA MOTOR SALES, U.S.A. INC.
TECHNICAL COMPLIANCE DEPARTMENT, S203
19001 S. WESTERN AVENUE
TORRANCE, CA. 90509-2991